

Linear Two Hole 90° Corner Angle

SAC-AB



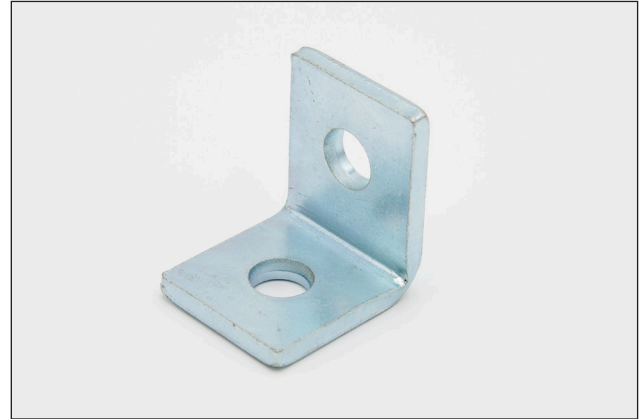
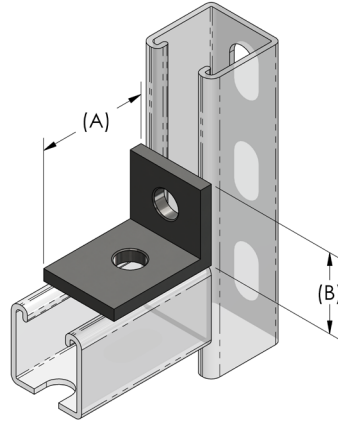
Overview

Rep Materials' Linear Two Hole 90° Corner Angle for strut is a fundamental connector designed to facilitate right-angle connections between strut channels, enhancing the versatility and structural integrity of support systems.

Featuring two precisely drilled holes, it allows for secure attachment to strut channels, ensuring a stable and reliable 90-degree junction.

Specs

- Designed to fit 1-5/8" Strut Channel
- Manufactured from Electro Galvanized 1/4" Steel Plate
- Hole Spacing (On-Center): 17/8" (48mm)
- Conforms to ASTM B633, Type III SC1



Item	(A)	(B)
SAC-AB-162X225	2"	1-7/8"
SAC-AB-200X187	1-5/8"	2-1/4"

WEIGHT CHART

Square Washers, Straight Plate and Angle Brackets

Name	Item	Size	Weights/PC lbs.	Weights/100 lbs.
Square Washer	SAC-SW02	1/4"	0.18	18
Square Washer	SAC-SW03	3/8"	0.18	18
Square Washer	SAC-SW05	1/2"	0.17	17
4 Hole Straight Plate	SAC-SP4H-725	7 1/4"	0.78	78
Angle Bracket	SAC-AB-162X225	2" X 1 7/8"	0.38	38
Angle Bracket	SAC-AB-200X187	1 5/8" X 2 1/4"	0.38	38
Angle Bracket 90	SAC-AB90-350X225	4 1/8" X 1 5/8"	0.58	58
Angle Bracket 90	SAC-AB90-412X162	3 1/2" X 2 1/4"	0.66	66
Angle Bracket 90	SAC-AB90-412X350	4 1/8" x 3 1/2"	0.78	78
Three Hole Flat Angle Plate	SAC-LB3H-350X350	3 1/2" X 3 1/2"	0.78	78

Submittal Information

Company Name	Phone	Date
Address	Project Name	Project Date
City	Project City	Comments
State & Zip	Project State	