



Product Catalog

Conduit, Strut & Fittings

2025



Stay Ahead with
Rep Materials Company





Stay Ahead with Rep Materials Company



About Us



visit repmaterials.com

Company Overview

Rep Materials Co. serves as a leading supplier of electrical raceway products across the United States. By integrating globally sourced conduit, strut and fittings with our domestic manufacturing capabilities, we support the construction and electrical sectors.

Our unique combination of sourcing and U.S.-based production positions us to manage and deliver on large-scale projects nationwide. With a comprehensive inventory that includes conduit, conduit fittings, custom threading, bending, multiple strut profiles, and strut fittings. We empower distributors to efficiently handle big projects, ensuring timely completion and adherence to budget constraints.



Steel Conduit

Your Foundation of Strength



Learn More



visit repmaterials.com



Conduit Overview

At Rep Materials, our steel conduit solutions—featuring Steel Rigid Conduit (RMC), Electrical Metallic Tubing (EMT), Intermediate Metallic Tubing (IMC), and high-quality conduit fittings—are built for performance and dependability. From heavy-duty industrial settings to Standard Electrical Raceway Systems for commercial use, our steel conduit provides superior protection for wiring and electrical systems.

Crafted to meet the highest UL standards, our conduit offers excellent strength and resistance to impact and corrosion, ensuring your installations stay secure and functional for the long term. Whether you're tackling complex construction projects or straightforward wiring jobs, Rep Materials' steel conduit delivers the reliability you need to get the job done right.



Conduit Line Card

Your Foundation of Strength

Learn More



Electrical Metallic Tubing (EMT)

- Trade sizes 1/2" - 4"
- Uniform galvanized protection
- EMT-Steel (UL797)
file # E531582



Rigid Steel Conduit (GRC)

- Trade sizes 1/2" - 6"
- Hot dipped galvanized coating
- Rigid conduit (UL6)
file # E531580



Intermediate Metallic Conduit (IMC)

- Trade sizes 1/2" - 4"
- Flexible and Light
- IMC (UL-1242) file # E531579



EMT Conduit Elbows

- Trade sizes 1/2" - 4"
- Galvanized EMT
- EMT-Steel (UL797)
file # E531582



Rigid Conduit Elbows

- Trade sizes 1/2" - 6"
- Galvanized Rigid Steel
- Rigid conduit (UL6)
file # E531580



EMT Special Radius Elbows

- Trade sizes 1/2" - 6"
- Stocking Radii: 24", 36", and 48"
- Special Order Radii: 60", 72", 96", 120", 144", and 150"
- EMT-Steel (UL797) file # E531582



Rigid Conduit Special Radius Elbows

- Trade sizes 1/2" - 6"
- Stocking Radii: 24", 36", and 48"
- Special Order Radii: 60", 72", 96", 120", 144", and 150"
- Rigid conduit (UL6)
file # E531580



Steel Couplings

- Trade sizes 1/2" - 6"
- Galvanized Steel
- NPSM Thread
- Rigid conduit (UL6)
file # E531580



Rigid Steel Conduit Nipples

- Trade sizes 1/2" - 6"
- Hot-dipped galvanized coating
- Custom Lengths Available
- Rigid conduit (UL6)
file # E531580





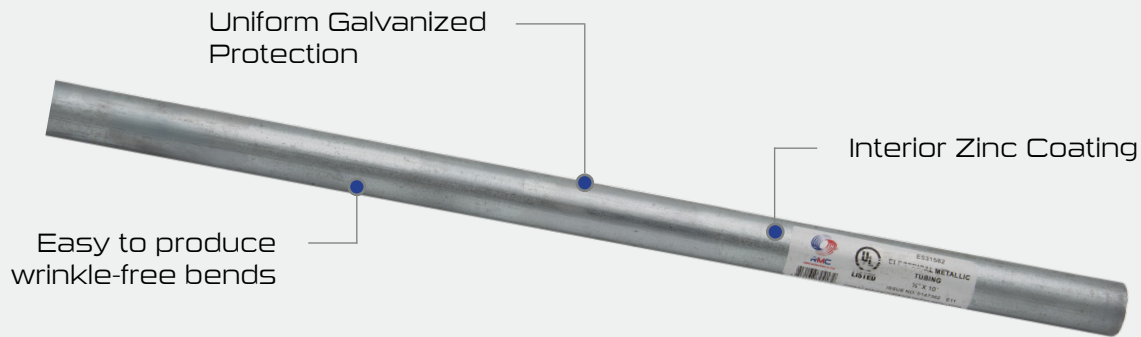
Steel Conduit EMT, Rigid, & IMC

Learn More



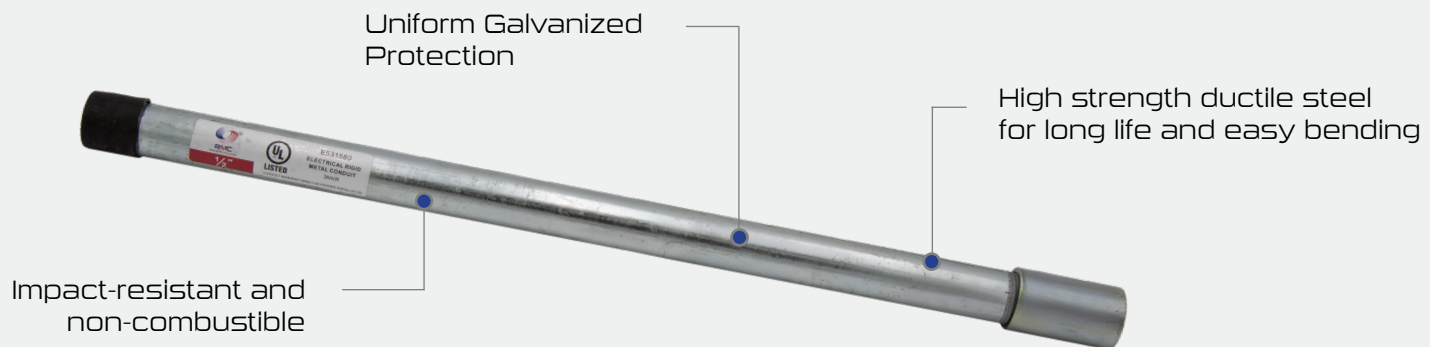
Electrical Metallic Tubing (EMT)

1/2" - 4" Available



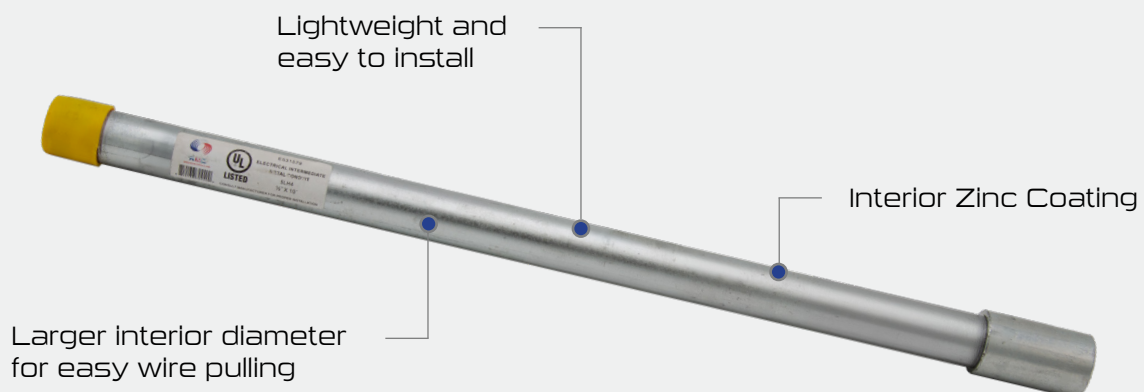
Galvanized Rigid Conduit (GRC)

1/2" - 6" Available



Intermediate Metallic Tubing (IMC)

1/2" - 4" Available





Conduit Elbows EMT & Rigid

Electrical Metallic Tubing (EMT) Elbows

1/2" - 4" Available

90°, 45°, 30°, 22.5°, 15° Available

Custom Degrees of Bend Available



Galvanized Rigid Conduit (GRC) Elbows

1/2" - 6" Available

90°, 45°, 30°, 22.5°, 15° Available

Custom Degrees of Bend Available



Quick Ship Available

Corrosion Resistant

*Interior Zinc Coating for
Faster Wire Pulling*

Learn More





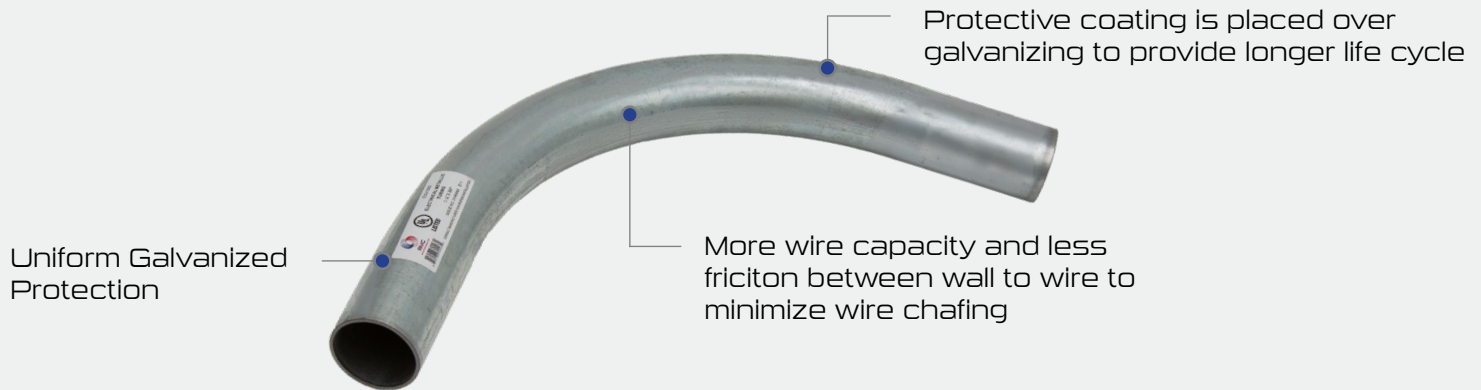
Special Radius Conduit Elbows EMT & Rigid

Electrical Metallic Tubing (EMT) Special Radius Elbows

1/2" - 4" Available

Stocking Radii: 24", 26", and 48"

Special Order Radii: 60", 72", 96", 120", 144", and 150"



Galvanized Rigid Conduit (GRC) Special Radius Elbows

1/2" - 6" Available

90°, 45°, 30°, 22.5°, 15° Available

Custom Degrees of Bend Available



Quick Ship Available

Corrosion Resistant

*Interior Zinc Coating for
Faster Wire Pulling*

Learn More





Rigid Couplings & Nipples Conduit Fittings

Rigid Steel Couplings

1/2" - 6" Available

Designed for use with GRC and IMC



Rigid Steel Conduit Nipples

1/2" - 6" Available



Quick Ship Available

Corrosion Resistant

*Interior Zinc Coating for
Faster Wire Pulling*

Learn More





Steel Strut

Your Foundation of Strength



Learn More



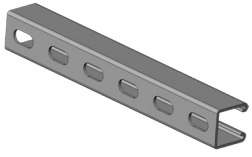
visit [repmaterials.com](https://www.repmaterials.com)

Strut Overview

Rep Materials' steel strut combines exceptional strength, unmatched durability, and superior corrosion resistance, making it the go-to choice for a wide range of construction and engineering projects.

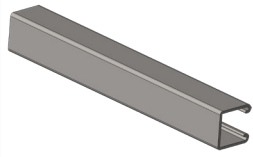
Designed to withstand the most demanding conditions, our steel strut ensures your projects are built on a foundation of reliability and resilience. Its robust construction not only supports heavy loads but also maintains its integrity in harsh environments, offering peace of mind and long-term performance.

With our steel strut, you're not just building; you're building on a foundation of strength.



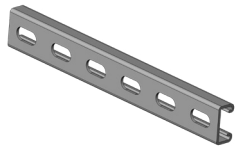
Strut Channel, Elongated Holes (Deep Profile)

- 12 Gauge Channel with Elongated Holes 9/16" x 1-1/8" on 2" Centers
- 1-5/8" x 1-5/8"
- Wt./100' = 189#
- Pre-Galvanized Steel ASTM A653



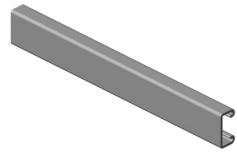
Strut Channel, Solid (Deep Profile)

- 12 Gauge Channel
- 1-5/8" x 1-5/8"
- Wt./100' = 194#
- Pre-Galvanized Steel ASTM A653



Strut Channel, Elongated Holes (Shallow Profile)

- 14 Gauge Channel with Elongated Holes 9/16" x 1-1/8" on 2" Centers
- 13/16" x 1-5/8"
- Wt./100' = 98#
- Pre-Galvanized Steel ASTM A653



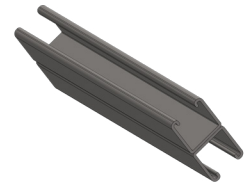
Strut Channel, Solid (Shallow Profile)

- 14 Gauge Channel
- 13/16" x 1-5/8"
- Wt./100' = 103#
- Pre-Galvanized Steel ASTM A653



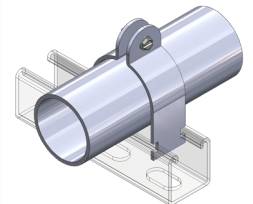
Strut Channel Back to Back, Elongated Holes

- 12 Gauge Back to Back Welded Channel with Elongated Holes 9/16" x 1-1/8" on 2" Centers
- 3-1/4" x 1-5/8"
- Wt./100' = 378#
- Pre-Galvanized Steel ASTM A653



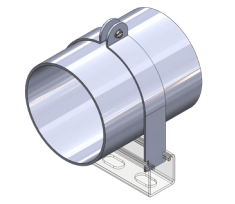
Strut Channel Back to Back, Solid

- 12 Gauge Back to Back Welded Channel 2-Pieces
- 3-1/4" x 1-5/8"
- Wt./100' = 388#
- Pre-Galvanized Steel ASTM A653



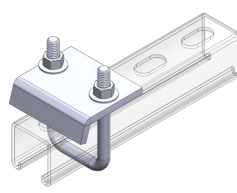
EMT Strut Strap

- Manufactured to fit standard openings of 1-5/8" strut channel
- Designed in sizes 1/2" thru 4" to support EMT conduit (please specify conduit size when ordering)
- EMT Strut Straps are Electro Galvanized



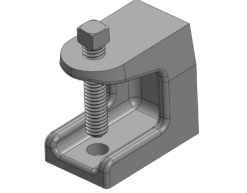
Rigid Strut Strap

- Manufactured to fit standard openings of 1-5/8" strut channel
- Designed in sizes 1/2" thru 6" to support Rigid conduit (please specify conduit size when ordering)
- Rigid Strut Straps are Electro Galvanized



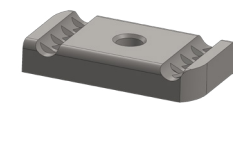
U-Bolt Beam Clamp

- Manufactured to secure 1-5/8" strut channels or all thread rod to beams or supports
- U-Bolt Beam Clamps are Electro Galvanized 1/4" thick steel



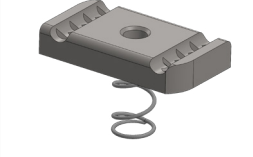
Beam Clamp

- Manufactured to secure 1-5/8" strut channels or all thread rod to beams or supports
- Beam Clamps are manufactured from Electro Galvanized cast iron
- Support for beams with a flange thickness not to exceed 5/8"



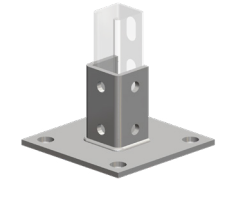
Plain Channel Nut

- Designed to grip the returned lip of the strut channel
- Sizes 1/4", 3/8" and 1/2"
- Grip Nuts are Electro Galvanized



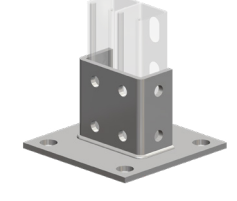
Spring Channel Nut

- Designed to grip the returned lip of deep profile strut channel
- Sizes 1/4", 3/8" and 1/2"
- Grip Nuts are Electro Galvanized



Single Channel Post Base

- Designed to fit 1-5/8" Strut Channel
- Manufactured from 1/4" Electro Galvanized Steel



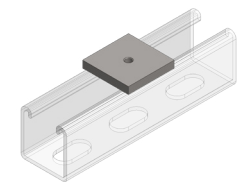
Double Channel Post Base

- Designed to fit 1-5/8" Strut Channel
- Manufactured from 1/4" Electro Galvanized Steel



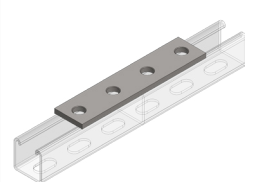
All Thread Rod

- Manufactured from Electro Galvanized Steel Rod
- Sizes 1/4", 3/8", 1/2"



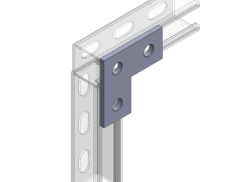
Square Washers

- Designed to fit 1-5/8" Strut Channel
- Manufactured from Electro Galvanized 1/4" Steel Plate
- Sizes 1/4", 3/8", 1/2"



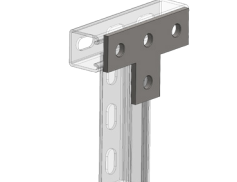
Four Hole Splice Plate

- Designed to fit 1-5/8" Strut Channel
- Manufactured from Electro Galvanized 1/4" Steel Plate



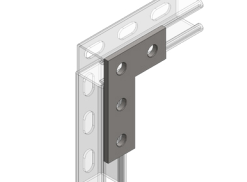
Three Hole Flat Angle Plate

- Designed to fit 1-5/8" Strut Channel
- Manufactured from Electro Galvanized 1/4" Steel Plate



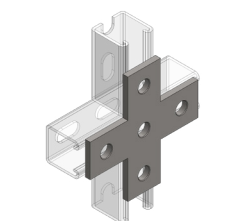
Four Hole "T" Plate

- Designed to fit 1-5/8" Strut Channel
- Manufactured from Electro Galvanized 1/4" Steel Plate



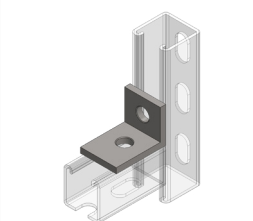
Four Hole Corner Joiner Plate

- Designed to fit 1-5/8" Strut Channel
- Manufactured from Electro Galvanized 1/4" Steel Plate



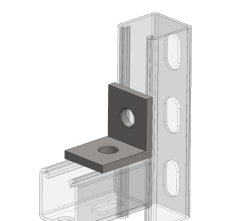
Five Hole Cross Plate

- Designed to fit 1-5/8" Strut Channel
- Manufactured from Electro Galvanized 1/4" Steel Plate



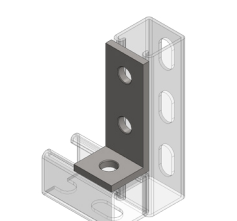
Linear Two Hole 90° Corner Angle

- Designed to fit 1-5/8" Strut Channel
- Manufactured from Electro Galvanized 1/4" Steel Plate



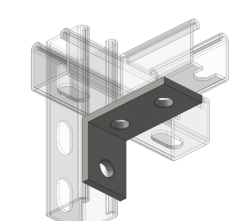
Perpendicular Two Hole 90° Connection Angle

- Designed to fit 1-5/8" Strut Channel
- Manufactured from Electro Galvanized 1/4" Steel Plate



Three Hole 90° Bracket

- Designed to fit 1-5/8" Strut Channel
- Manufactured from Electro Galvanized 1/4" Steel Plate



Three Hole Angle Bracket

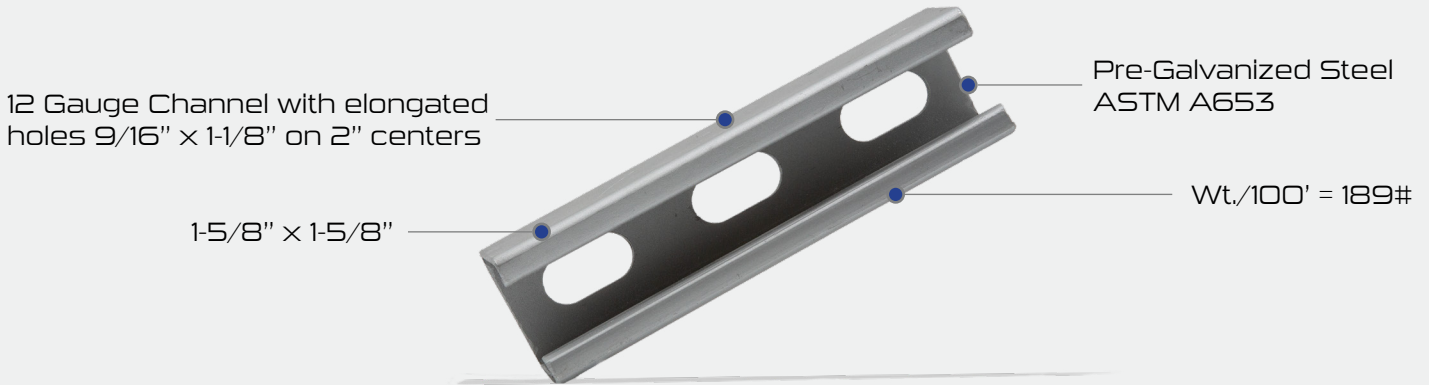
- Designed to fit 1-5/8" Strut Channel
- Manufactured from Electro Galvanized 1/4" Steel Plate



Strut Channels Elongated Holes

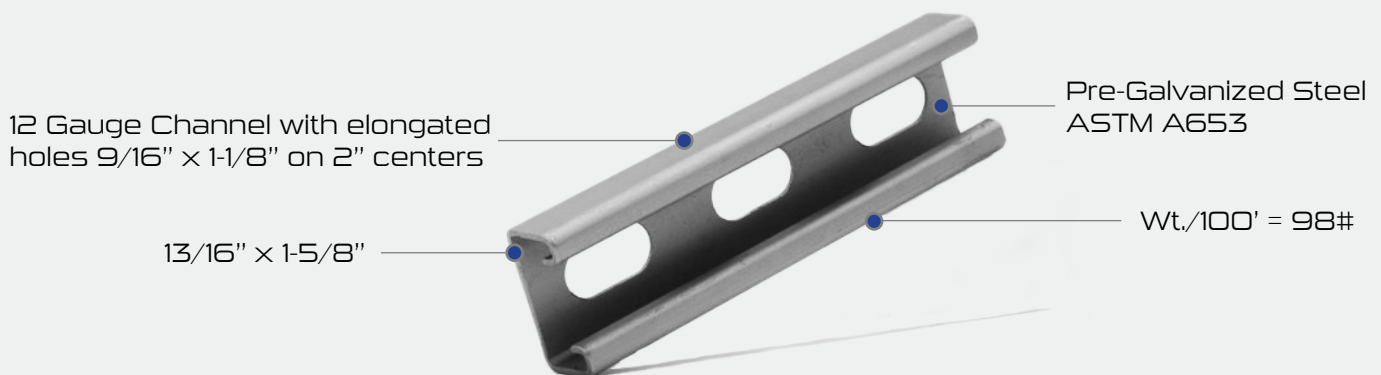
Deep Profile Elongated Holes

STR-12G-158-158-EHO



Shallow Profile Elongated Holes

STR-12G-158-158-EHO



Ease of Installation

Flexible Mounting

Lightweight Design

Enhanced Load Distribution

Learn More

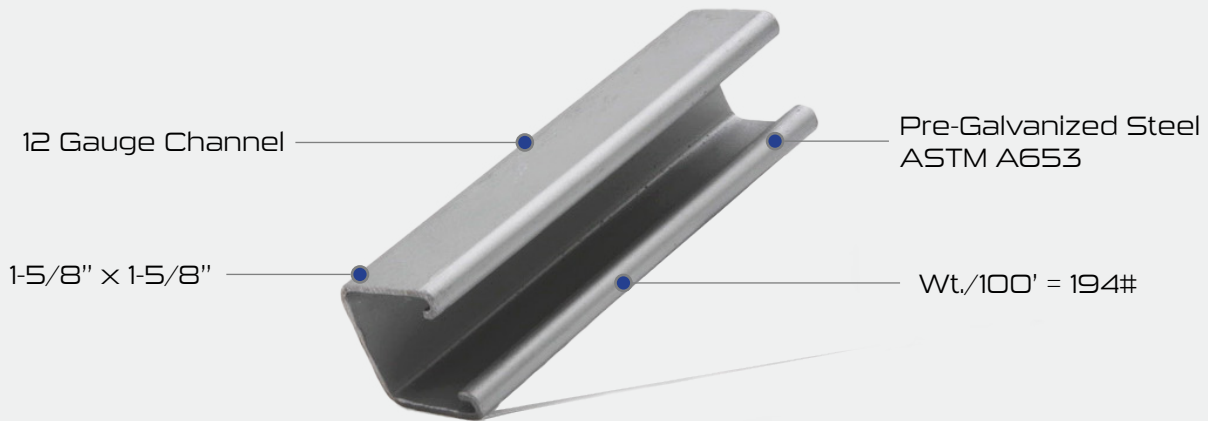




Strut Channels Solid

Deep Profile Solid

STR-12G-158-158-SLD



Shallow Profile Solid

STR-12G-158-158-SLD



Reinforced Structural Integrity
Greater Load Capacity
Increased Durability
Enhanced Load Distribution

Learn More





Strut Channels Back to Back

Elongated Holes

STR-12G-158-158-EHO-BB

12 Gauge Back to Back
Welded Channel with
Elongated Holes $9/16''$
 $\times 1-1/8''$ on $2''$ Centers

$3-1/4'' \times 1-5/8''$



Pre-Galvanized Steel
ASTM A653

Wt./100' = 378#

Solid

STR-12G-158-158-SLD-BB

12 Gauge Back to Back
Welded Channel 2-Pieces

$3-1/4'' \times 1-5/8''$



Pre-Galvanized Steel
ASTM A653

Wt./100' = 388#

Versatile Design

Efficient Installation

Space-Saving Optimization

Exceptional Load Bearing Capacity

Learn More





Strut Straps EMT & Rigid

EMT Strut Straps

SAC-SSE

Manufactured to fit standard openings of 1-5/8" strut channel

EMT Strut Straps are Electro Galvanized



Designed in sizes 1/2" thru 4" to support EMT conduit, please specify conduit size when ordering

Rigid Strut Straps

SAC-SSR

Manufactured to fit standard openings of 1-5/8" strut channel

Rigid Strut Straps are Electro Galvanized



Designed in sizes 1/2" thru 6" to support Rigid conduit, please specify conduit size when ordering

Secure Fastening
Durable and Strong
Easy to Install
Available in Various Sizes

Learn More





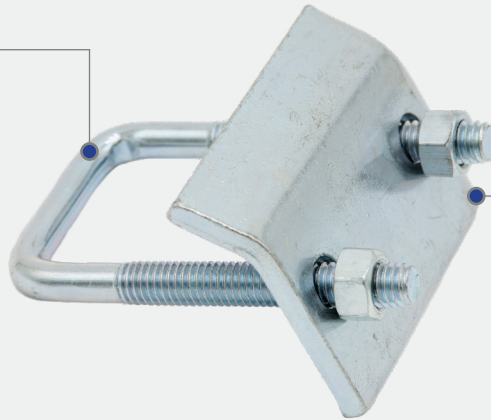
Clamps

U-Bolt & Beam

U-Bolt Beam Clamp

SAC-BCUB338

Manufactured to secure 1-5/8" strut channels or all thread rod to beams or supports

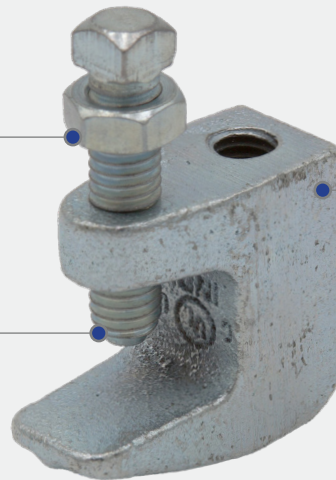


U-Bolt Beam Clamps are Electro Galvanized 1/4" thick steel

Beam Clamp

SAC-BCF

Manufactured to secure 1-5/8" strut channels or all thread rod to beams or supports



Support for beams with a flange thickness not to exceed 5/8"

Beam Clamps are manufactured from Electro Galvanized cast iron

Robust Construction
Adjustable and Flexible
Superior Load-Bearing Capacity
Quick and Secure Attachment

Learn More





Channel Nuts Spring and Plain

Spring Channel Nut

SAC-BCUB338

Designed to grip the
returned lip of deep
profile strut channel

Sizes $\frac{1}{4}$ ", $\frac{3}{8}$ " and $\frac{1}{2}$ "



Grip Nuts are Electro
Galvanized

Plain Channel Nut

SAC-PCN

Designed to grip the
returned lip of the strut
channel

Sizes $\frac{1}{4}$ ", $\frac{3}{8}$ " and $\frac{1}{2}$ "



Grip Nuts are Electro
Galvanized

Enhanced Grip and Stability

Versatile Usage

Vibration Resistance

Pre-Assembly Convenience

Learn More





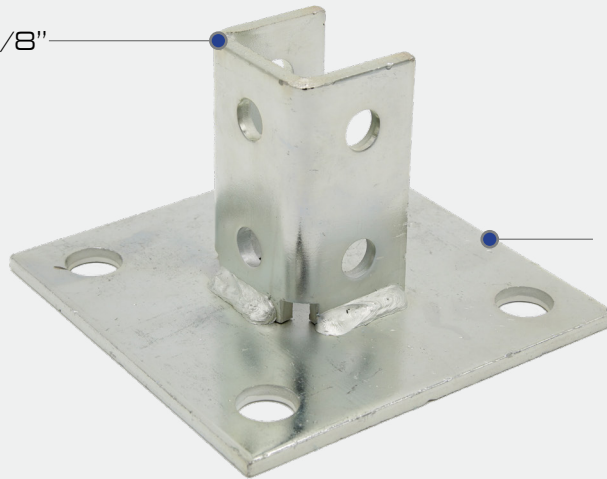
Post Bases

Single and Double Channel

Single Channel Post Base

SAC-BPSC

Designed to fit 1-5/8"
Strut Channel

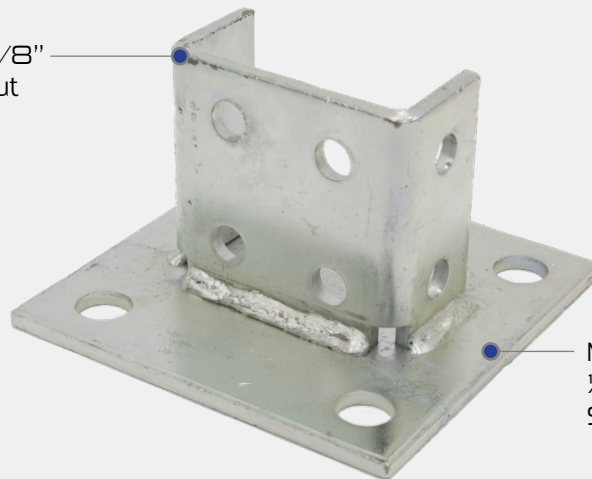


Manufactured from 1/4"
Electro Galvanized Steel

Double Channel Post Base

SAC-BPDC

Designed to fit 1-5/8"
Back to Back Strut
Channel



Manufactured from
1/4" Electro Galvanized
Steel

Sturdy Support
Easy Installation
Robust Construction
Versatile Applications

Learn More

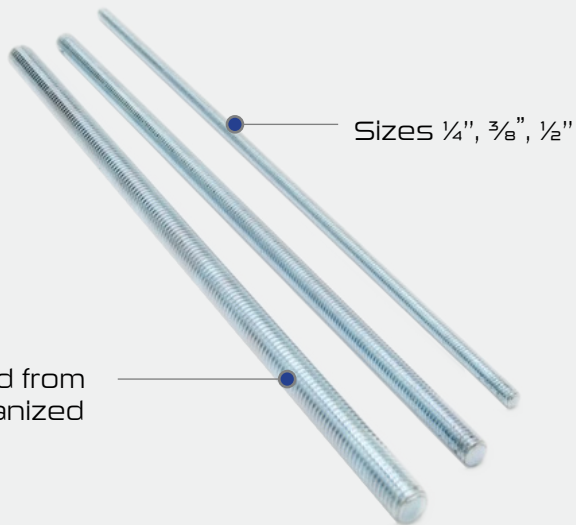




All Thread Rod Zinc Plated

All Thread Rod

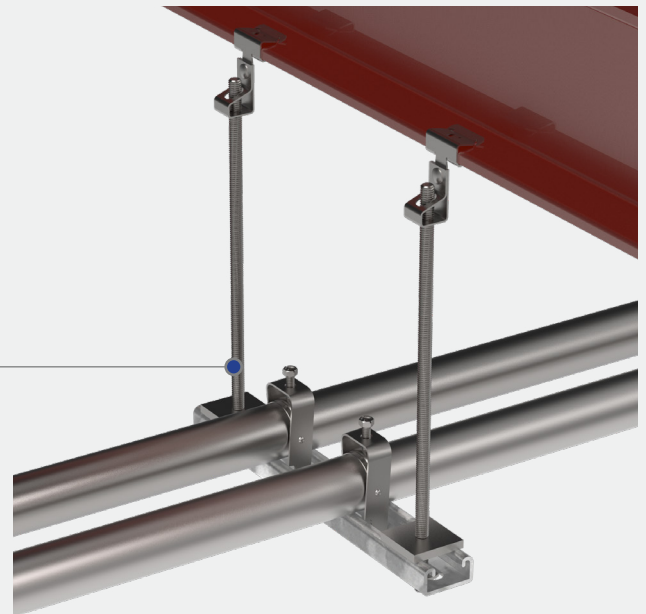
SAC-TR



Sizes 1/4", 3/8", 1/2"

Manufactured from
Electro Galvanized
Steel Rod

Example of Conduit Raceway
System supported by Strut,
Fittings, and All Thread Rod



Versatile Application
High Tensile Strength
Customizable Lengths
Corrosion Resistance

Learn More





Washers

Straight and Angle Plates

Square Washer

SAC-SW

- Sizes ¼", ⅜", ½"



Four Hole Straight Plate

SAC-SP4H-725



Three Hole Flat Angle Plate

SAC-LB3H-350X350



Four Hole "T" Plate

SAC-TP4H



Key Features

- Designed to fit 1-5/8" Strut Channel
- Manufactured from Electro Galvanized ¼" Steel Plate
- Hole Spacing (On-Center): 17/8" (48mm)
- Conforms to ASTM B633, Type III SC1

High Durability

Reinforced Corner Connections

Precise Alignment and Support

Customizable Angles

Learn More

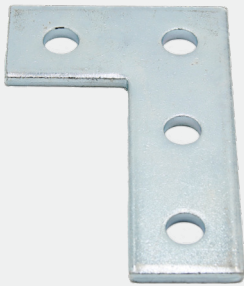




Washers Angle Plates and Brackets

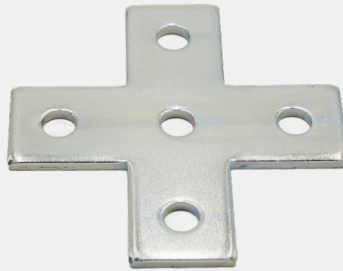
Four Hole Corner Joiner Plate

SAC-CJP4H



Five Hole Cross Plate

SAC-CP5H



Linear Two Hole 90°

SAC-AB



Perpendicular Two Hole 90°

SAC-P90DCA2H



Three Hole 90° Bracket

SAC-AB90



Three Hole Angle Bracket

SAC-AB3H



Key Features

- Designed to fit 1-5/8" Strut Channel
- Manufactured from Electro Galvanized 1/4" Steel Plate
- Hole Spacing (On-Center): 17/8" (48mm)
- Conforms to ASTM B633, Type III SC1

High Durability
Reinforced Corner Connections
Precise Alignment and Support
Customizable Angles

Learn More





Stainless Steel

Coming Q1 2025



Stainless Overview

Rep Materials Co. is proud to announce the launch of our stainless steel raceway system, designed primarily to meet the rigorous demands of the food and beverage industry. Engineered with exceptional corrosion resistance, our system excels in harsh washdown environments and hygienic applications where cleanliness is critical.

With a focus on durability and compliance, this innovative solution ensures reliable performance while supporting the industry's highest sanitation standards. Whether for new installations or upgrades, our stainless steel raceway system is the ideal choice for facilities prioritizing quality, longevity, and safety.





Stay Ahead with Rep Materials Company



About Us



visit repmaterials.com

Contact Information

Phone:

1 (408) 883-3806

Email:

Sales@RepMaterials.com

CustomFab@RepMaterials.com

Address:

620 Graves Avenue

Oxnard, California

93030